

STARCERAM® S RTP GRADE SQ

2021.02.18

SPECIFICATIONS

- ▶ Chemical formula: SiC
- ▶ Chemical name: Silicon carbide
- ▶ Description of product: Formulation of silicon carbide and processing additives for pressing, green machining and sintering
- ▶ Colour: Anthracite grey

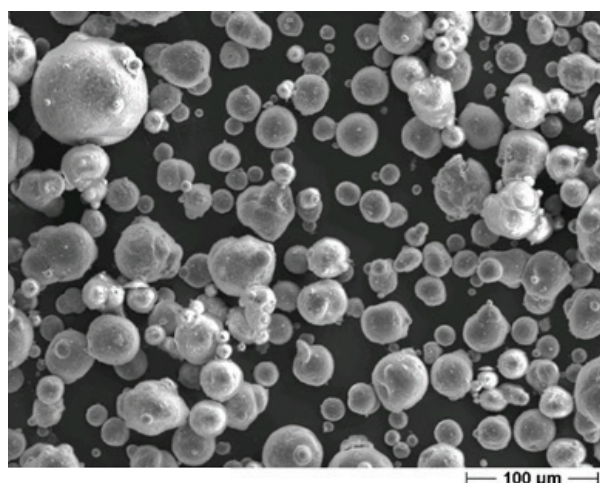
CHEMICAL CHARACTERISTICS (TYP.)^{1,2}

C	[%]	32.50 - 33.50
B	[%]	0.45 - 0.60
O	[%]	max. 5.00
Fe	[%]	max. 0.05
Al	[%]	max. 0.04
Ca	[%]	max. 0.01

¹ Mass fraction in wt %

² Information on testing methods on request

SEM PHOTOMICROGRAPH



PHYSICAL CHARACTERISTICS (TYP.)

Granule size distribution in Vol % ³		
> 200 μm	[%]	max. 2
< 38 μm	[%]	max. 45
Apparent density ⁵ [g/cm ³] 0.70 - 0.85		
Green density ⁴ [g/cm ³] 1.80 - 1.90		
Sintered density ⁶ [g/cm ³] min. 3.13		

³ Beckman Coulter by laser light diffraction, dry dispersion per ISO 13320

⁴ 1,000 kg/cm²

⁵ EN 725-9

⁶ 2,100 °C, Ar, 0 bar

PACKAGING

- ▶ 40 kg steel drums with polyethylene inlet (60 l)
- ▶ 6 drums on euro-pallet (800 x 1,200) = 1 packaging unit of 240 kg



STARCERAM® S RTP GRADE SQ

2021.02.18

STORAGE & HANDLING

StarCeram® S rtp, as a complex system of organic and inorganic ingredients, is made for early usage. The shelf-life for unrestricted processability is dependent on the storage conditions and the specific application it is used for.

Storage and handling are subject to the rules and regulations in the country of use.

Store at room temperature in a sealed closed, original container.

HAZARDS IDENTIFICATION IN ADVERTISING (REGULATION (EC) NO 1272/2008 ARTICLE 48)

Eye irritation, Category 2

DOCUMENTATION

An inspection document in accordance with EN 10204 is supplied with every shipment.

The information contained herein, and in particular the recommendations relating to the application and end-use of our products, are given in good faith based on our current knowledge and experience. The information do not constitute a guarantee with respect to properties of the products. Since we have no control over the application modalities, no guarantee is granted with respect to merchantability or fitness for a particular purpose. It is your sole responsibility to validate the suitability and completeness for your own use. We therefore recommend to always perform a test according to specific circumstances. Any liability in respect of the information in this data sheet or any other written or oral recommendation(s) regarding the concerned product is excluded, except if otherwise explicitly agreed and except in case of death or personal injury, intent or gross negligence and under any applicable mandatory product liability law. Technical data are subject to change without notice. The newest version of the technical data sheet replaces all preceding versions. The trademarks, trade names, logos and other designations of origin contained in this data sheet are registered and unregistered intellectual property rights of KYOCERA Fineceramics Precision GmbH. It is forbidden to copy or use information from this data sheet in whole or in part, especially in dealings with third parties.