

## SPECIFICATIONS

- ▶ Chemical formula: SiC
- ▶ Chemical name: Silicon carbide
- ▶ Characteristics: Pressureless sintered silicon carbide
- ▶ Description of product: Parts made of silicon carbide
- ▶ Colour: black, anthracite

## CHEMICAL CHARACTERISTICS (TYP.)

Si	[wt%]	70
C	[wt%]	30

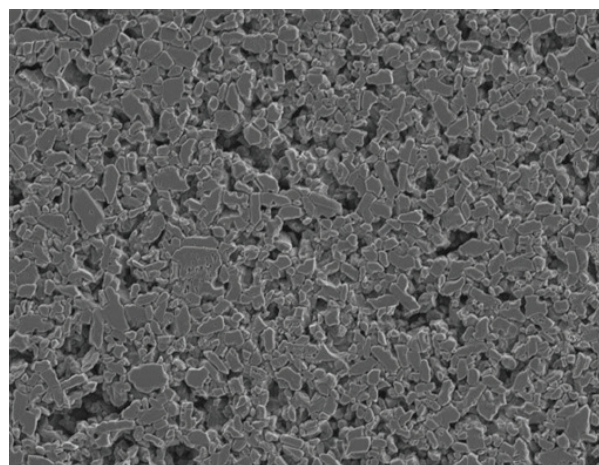
## MECHANICAL & PHYSICAL CHARACTERISTICS (TYP.)

Density	[g/cm <sup>3</sup> ]	3.13
Closed porosity	[vol%]	> 2
Flexural strength $\sigma_{b4,m}$ (RT) <sup>1</sup>	[MPa]	375
Weibull modulus (RT)	[-]	> 10
Young's modulus (RT)	[GPa]	395
Fracture toughness <sup>2</sup>	[MPa $\sqrt{m}$ ]	3.0
Thermal conductivity (RT)	[W/mK]	125
Thermal expansion CTE (RT-1,000°C)	[ $\times 10^{-6}/K$ ]	4.5
Hardness (DPH)	[GPa]	25
Thermal shock coefficient R1	[K]	180
Max. working temperature	[°C]	1,600
Specific resistance	[ $\Omega cm$ ]	> 10 <sup>4</sup>

<sup>1</sup> 4-point-bending 40/20 mm

<sup>2</sup> ICL method

## SEM PHOTOMICROGRAPH



SSiC-SKE 1159, 6kV, 6mm, 1000x

30  $\mu m$

## PACKAGING

StarCeram® S products are individually packed, depending on size.

Packaging acc. to transport regulations.



## STARCERAM® S

2021.02.18

### STORAGE & HANDLING

Handle with care! Ceramic products may break if not treated properly. Storage and handling are subject to the rules and regulations in the country of use.

### HAZARDS IDENTIFICATION IN ADVERTISING (REGULATION (EC) NO 1272/2008 ARTICLE 48)

none

### DOCUMENTATION

An inspection document in accordance with EN 10204 is supplied with every shipment.

The information contained herein, and in particular the recommendations relating to the application and end-use of our products, are given in good faith based on our current knowledge and experience. The information do not constitute a guarantee with respect to properties of the products. Since we have no control over the application modalities, no guarantee is granted with respect to merchantability or fitness for a particular purpose. It is your sole responsibility to validate the suitability and completeness for your own use. We therefore recommend to always perform a test according to specific circumstances. Any liability in respect of the information in this data sheet or any other written or oral recommendation(s) regarding the concerned product is excluded, except if otherwise explicitly agreed and except in case of death or personal injury, intent or gross negligence and under any applicable mandatory product liability law. Technical data are subject to change without notice. The newest version of the technical data sheet replaces all preceding versions. The trademarks, trade names, logos and other designations of origin contained in this data sheet are registered and unregistered intellectual property rights of KYOCERA Fineceramics Precision GmbH. It is forbidden to copy or use information from this data sheet in whole or in part, especially in dealings with third parties.